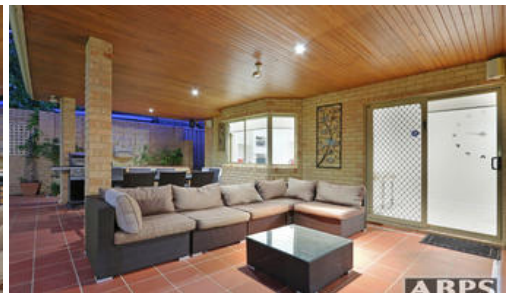


Sold



5 Nicol Cl, Kardinya



AN ENVIABLE & PRIVATE LIFESTYLE AWAITS.....

Positioned in quiet Somerville cul-de-sac within minutes walking distance to parklands and lake. This wonderful architect designed family home has it all comprising large entry foyer, 4 spacious bedrooms with built in robes, master with walk in wardrobe and en-suite inc spa, study with built in furniture, 3 living zones, large family and separate games, modern kitchen & meals, formal lounge and dining, double lock up garage and great outdoor featuring alfresco entertaining with built in bbq and below ground pool.

Additional features include:

- Quality terracotta roof
- Spacious portico
- High ceilings throughout
- Total of 300 sqm floor area
- Porcelain and timber flooring
- Security Alarm System, roller shutters
- 3Kv solar panels
- Air conditioning
- Set on fully reticulated 759 sqm block

For further information or a free market appraisal on your property, please call Marek Srokowski on 0412 193 419

The above information provided has been furnished to us by the vendor/s. We have not verified whether or not that information is accurate and do not have any belief in one way or the other in its accuracy. We do not accept any responsibility to any person for its accuracy and do no more than pass it on. All interested parties should make and rely upon their own inquiries in order to determine whether or not this information is in fact accurate.

🛏 4 🚿 2 🚗 2

Price	SOLD for \$850,000
Property Type	residential
Property ID	513
Land Area	759 m2
Floor Area	300 m2

Agent Details

Marek Srokowski - 0412 193 419

Office Details

Bull Creek
Suite 2, Parry Village Shopping Centre, 118
Parry Avenue Bull Creek WA 6149 Australia
08 9310 2066

