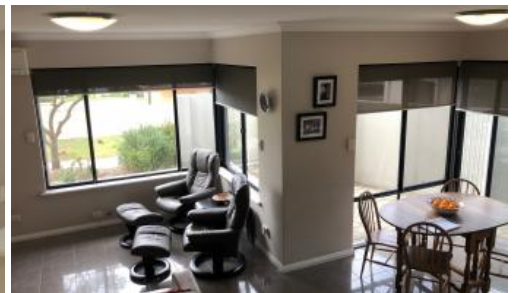




7A Callaway Cres, Kardinya



## AN ENVIABLE & PRIVATE LIFESTYLE AWAITS....

Mediterranean home in the heart of **Somerville Estate** on 531 sqm easy care elevated block. Features entry hall with high ceilings, spacious lounge room and large formal dining area, which could be converted to 4<sup>th</sup> bedroom. The family room is leading to meals area **and superbly renovated kitchen fitted with quality appliances**. Upstairs consist of master bedroom with en-suite, 2 extra bedrooms, main bathroom, separate WC & lounge with balcony.

### Other features include:

- Freshly painted, quality porcelain floor
- Balcony with sweeping City views
- Double garage, large gazebo for your outdoor entertaining

### You will never grow out of this extensive, attractive & timeless dwelling.

For further information or a free market appraisal on your property, please call

Marek Srokowski on 0412 193 419.

The above information provided has been furnished to us by the vendor/s. We have not verified whether or not that information is accurate and do not have any belief in one way or the other in its accuracy. We do not accept any responsibility to any person for its accuracy and do no more than pass it on. All interested parties should make and rely upon their own inquiries in order to determine whether or not this information is in fact accurate.

🛏 3 🚿 2 🚗 2 📏 531 m2

<b>Price</b>	SOLD for \$740,000
<b>Property Type</b>	Residential
<b>Property ID</b>	550
<b>Land Area</b>	531 m2

### Agent Details

Marek Srokowski - 0412 193 419

### Office Details

Bull Creek

Suite 2, Parry Village Shopping Centre, 118  
Parry Avenue Bull Creek WA 6149 Australia  
08 9310 2066

